



Demonstration of Model Community Forests to Promote Community Forestry Development and Improve Livelihood of Local Communities (3rd Call)

Myanmar

(3rd Call)

5-5-2022

Sein Moe (Mr.)
Project Manager
Assistant Director, Forest Department
MYANMAR

Contents



01

**Basic
Information of
Project**

02

**Implementation
of Project
Activities**

03

**Challenges and
Way Forwards**

01



Basic Information of Project

1. Project Information

Project Title	- Demonstration of Model Community Forests to Promote Community Forestry Development and Improve Livelihood of Local Communities
Executing Agency:	Forest Department, Ministry of Natural Resources and Environmental Conservation, Myanmar
Implementing Agency:	Extension Division, Forest Department, MYANMAR
Cooperating Agencies:	Community Forestry Unit (CF Unit) Community Forestry National Working Group (CFNWG), Ministry of Foreign Affairs (MOFA)
Duration:	2 years
Approximate Starting Date:	2020 Dec to 2022 Dec (about two years)
BUDGET (USD):	290,002 US\$
Funding Agency	Mekong-ROK Cooperation Fund-MKCF



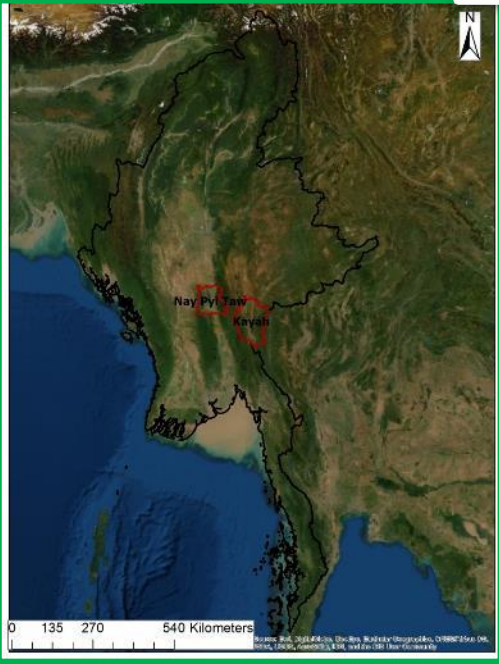
Themes of the Project and Project Location



The main objectives of project are:

1. To strengthen the participatory forest conservation and management as well as reduce poverty of local communities through livelihood improvement under Community Forestry
2. To promote Community Forest based Enterprise (CFE) development under CF in the country

Themes of the Project and Project Location



Model 1: CF based on agroforestry in **Nay Pyi Taw** for development of **agroforestry** designs suitable with local situation

Model 2: CF based on **community forestry-based tourism** as CFE in **Shan State**

Model 3: CF based on **value-added non-timber forest product production** as CFE in **Shan State**



1



2



3

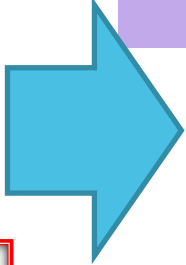


Project Location

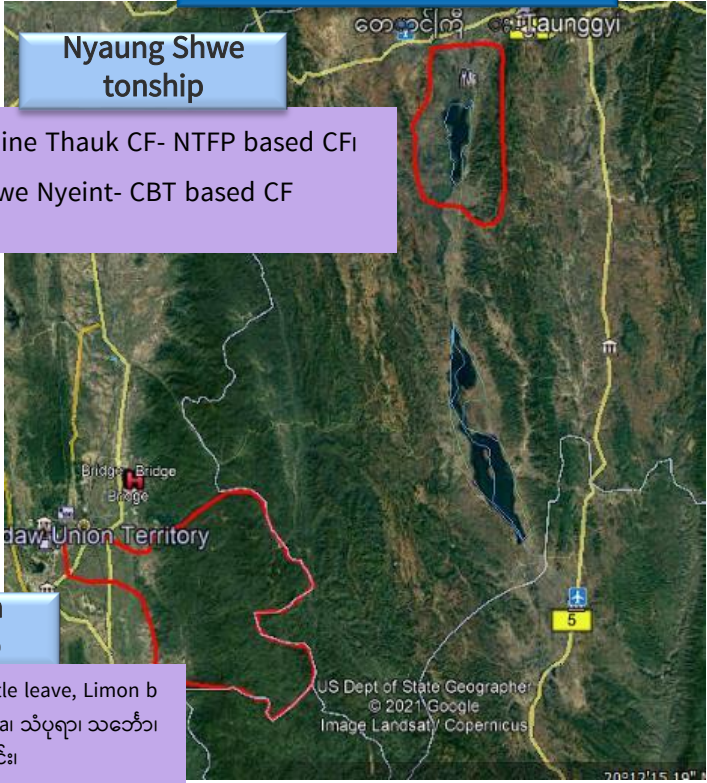
Original Site



Loikaw and Demoso Township



Implementation Site



- 1. Mine Thauk CF- NTFP based CFi
- 2. Lwe Nyeint- CBT based CF

Pyinmana Townhsip

Phalaung village- bettle leave, Limon b anana, papayay သံပုရာ၊ သင်္ဘော၊ ငှက်ပျော၊ ဆွနွင်း၊

0 135 270 540 Kilometers

US Dept of State Geographer © 2021 Google Image Landsat/ Copernicus

Organizational Structure for Project Implementation



Project Steering

In accordance with guidance of Director General of FD and Coordination with MI:

- Take responsibility for overall management and implementation of project activities
 - Prepare detailed annual work plan and budget plan
 - Arrange to hire the external experts
 - Implement the approved work plan
 - Organize the trainings for communities and local FD staff
 - Monitor the implementation of field staff
 - - Prepare and Submit progress/completion/ technical/ audit reports and other necessities to respective Project Monitoring Team and MI

HQ team

Technical Advisory Board
(CFNWG and CF unit)

Experts Teams
PMU

Project

Project Monitoring Team

- Coordination with local line departments and regional government
- Coordination with local communities
- Monitoring field works and providing technical advices to Project Director, Project Managers and Field Staff
- Reporting to HQ

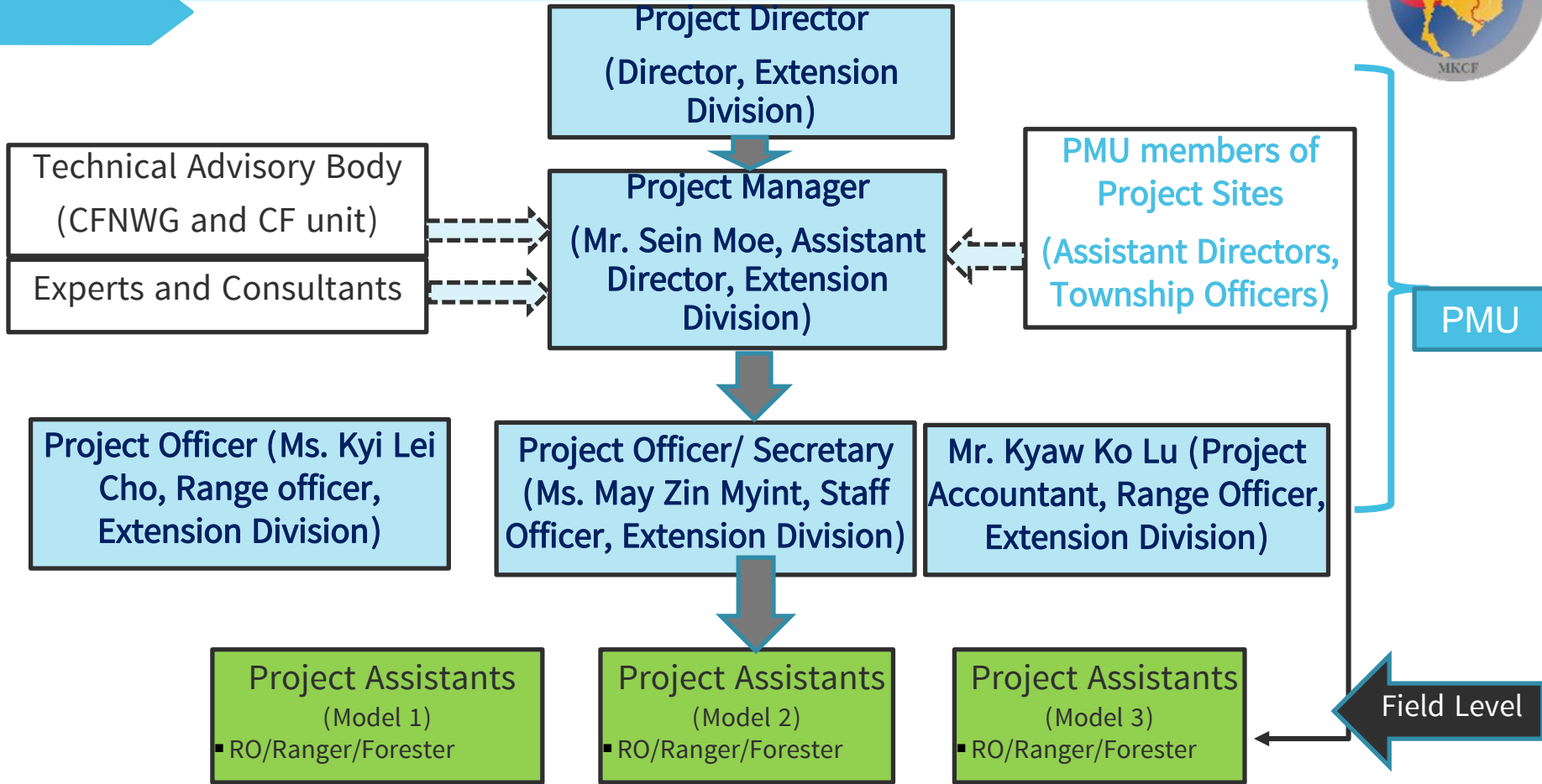
Field Staff

District
Township

Under the supervision of Project Manager and Project Officers:

- Assist the communities for the process of CF and CBT development
- Implementation of field work for forest restoration and relevant field work
- Participate in the trainings provided by the project
- Arrange the field visits of communities
- Assist in the preparation of capacity building trainings (invitation, venue preparation, logistic of participant)
- Disseminate project information and technical know-how to local communities
- Facilitate field visits of all project personnel including Project Team and external experts

Organizational Structure for Project Implementation



Project Steering Committee (PSC)



Six Monthly Meeting

- | | |
|--|-----------|
| 1. Director General (Forest Department) | Chairman |
| 2. Deputy Director General (planning and policy), FD | Member |
| 3. Director, Administration division | Member |
| 4. Director, Planning and statistic division | Member |
| 5. Director, Finance division | Member |
| 6. Director, Naypyitaw, | Member |
| 7. Director, Shan State | Member |
| 8. Representative from Mekong Institute | Member |
| 9. Representative from MOFA | Member |
| 10. Director, Extension Division | Secretary |

PSC will be formed in next week

Project Management Unit (PMU)



Monthly in project site or online meeting

1. Mr. Hla Oo, Director, Extension Division Project Director
2. Mr. Sein Moe, Assistant Director, Extension Division Project Manager
3. Mr. Aung Zaw Htoo, Assistant Director, Dekkhina District, Naypyitaw Project Supervisor
4. Mr. Kyaw Kyaw Oo, Assistant Director, Taunggyi District, Shan State Project Supervisor
5. Mr. Myo Min Thein, Township Officer, Pyinmana Township, Naypyitaw Field Coordinator
6. Mr. Zaw Zaw Oo, Township Officer, Nyaung Shwe Township, Shan State Field Coordinator
7. Ms. May Zin Myint, Staff Officer, Extension Division Project Secretary
8. Range Officer Accountant

Pamphlet of Project Information



Project Information

Project Title	- Demonstration of Model Community Forests to Promote Community Forestry Development and Improve Livelihood of Local Communities
Project Location	- Pynmana township, Dekkhina District, Naypyitaw and Nyaungshwe Township, Taunggyi District, Shan State
Period	- 2020-2022 (2-Year)
Fund supported Organization	-Mekong Korea Cooperation Fund -MKCF
Implementing agency	- Extension Division, Forest Department, Myanmar
Cooperation agency	- Forest Research Institute Center for Forestry Development Training Center

Objectives

Promotion of Participatory Forest Management through livelihood improvement of local people



Specific Objectives

- ⇒ To strengthen the participatory forest conservation and management as well as reduce poverty of local communities through livelihood improvement (Community Forestry)
- ⇒ To promote Community Forest based Enterprise (CFE) development (from subsistence to commercial)

Activities

Establishment of Community Forest

- 3 Community Forest Promotion
- Agroforestry based Community Forest
- Forest Inventory with CF User participatory
- Revising the Management Plan of Community Forestry Instruction (2019)

Capacity Building of Local People and Staffs

- Capacity Building for local people and Staff from Forest Department about CF
- Training on Basic CF and CFE with people participation
- Training on Livelihood improvement of NTFP
- Training on Forest Inventory in CF
- Training on Agroforestry development
- Exchange Visit
- Review on Workshop for motivation and Networking of Community Forest User in Township, District, Regional level



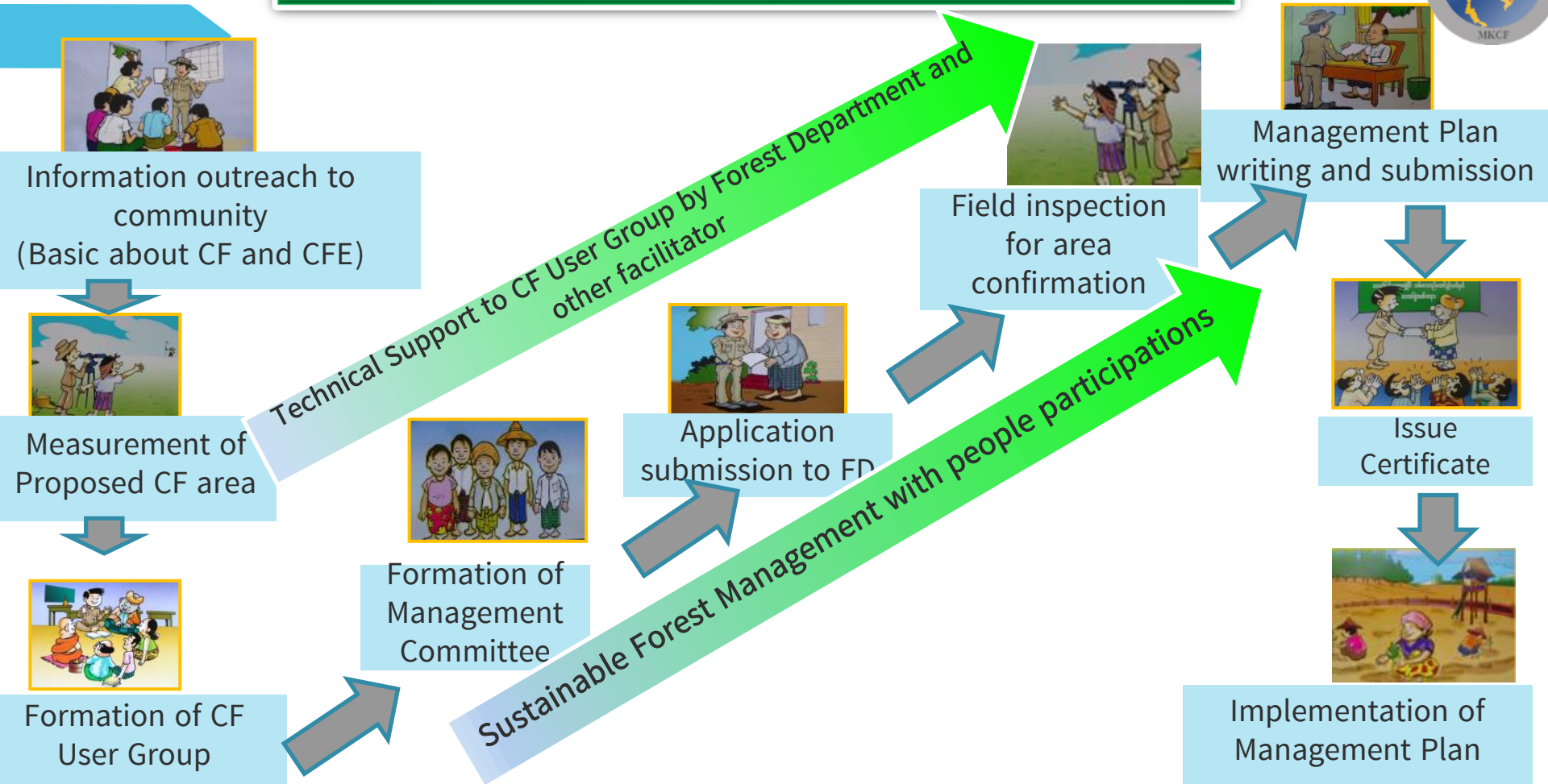
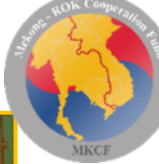
Implementation of Project Activities



02

Project Activities

Steps for Establishment of Community Forestry



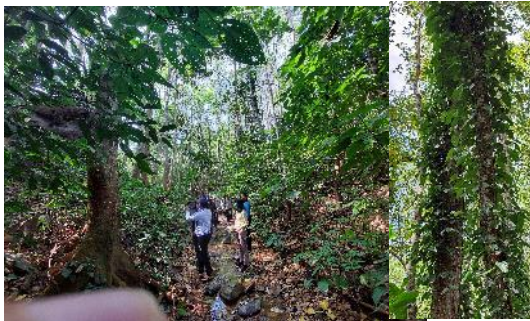
Main Activities for each theme



Model 1: Agroforestry based CF in Nay Pyi Taw

- Consultation meetings and Site Selection (A.1.1)
- Assessment of needs and livelihood condition (A. 1.3)
- Establishment of CF (certificate application stage) (A.1.4)
- Forest restoration (Implementation of management plan) (A.2)
- Training of basic course for CF and CFE development (B.1)
- Training of Agroforestry Development (B.5)
- Training for financial management and networking (B.7)
- Exchange visit (B.8)
- Providing revolving fund (C.4)

Phalaung CF in near Naypyitaw



Main Activities for each theme



Model 2: CF with Community Forest based Tourism CFE

- Consultation meetings and Site Selection (A.1.1)
- Assessment of needs and livelihood condition (A. 1.3)
- Establishment of CF (certificate application stage) (A.1.4)
- Forest Inventory to assess existing forest resources (A.1.5)
- Forest restoration (Implementation of management plan) (A.2)
- Training of forest inventory and forest resource management (B.2)
- Training of market analysis and development for CFE (B.3)
- Training of basic course for tourism development (B.6)
- Training for financial management and networking (B.7)
- Exchange Visit (B.8)
- Analysis of potential CFE type and socioeconomic survey (C.1)
- Development of CFE business plan (C.2)
- Initiation of business plan (C.3)
- Providing revolving fund (C.4)



Lwentyeing CF in near Inle lake

Main Activities for each theme



Model 3: CF with Non-timber forest product based CFE (in Existing CF)

- Consultation meetings and Site Selection (A.1.1)
- Measurement of selected area and boundary delineation (A.1.2)
- Assessment of needs and livelihood condition (A. 1.3)
- Forest Inventory to assess existing forest resources (A.1.5)
- Updating existing management plan (A.1.6)
- Forest restoration (Implementation of management plan) (A.2)
- Training of forest inventory and forest resource management (B.2)
- Training of market analysis and development for CFE (B.3)
- Training of value added products (B.4)
- Training for financial management and networking (B.7)
- Exchange Visit (B.8)
- Analysis of potential CFE type and socioeconomic survey (C.1)
- Development of CFE business plan (C.2)
- Initiation of business plan (C.3)
- Providing revolving fund (C.4)

Marlar tube (*Hitchenia glauca*)



Activities Completed and Ongoing



Sr.	Activities	Participants	Unit	Remark
1	Meetings in PMU	60	6 times	Completed
2	Meeting with local people	210	10 times	Completed
3	CF training (3 days)	96	6 times	Completed
4	CBT Training (3 days)	16	1 Time	Completed
5	Agroforest Training	18	1 time	Completed
6	Workshop on Review of Community Forestry User members	180	2 time	Completed
7	CF assessment for site selection	10 villages	1 time	Completed
8	CFE potential Assessment	2 villages	2	Ongoing
9	CFE development plan preparation	2 villages	2	Ongoing
10	Revising Management Plan of CF for 30 years	2 CF	2	Ongoing
11	New Management Plan preparation	1 CF	1	Ongoing

Record Photos

Inception Workshop (6-1-2021)

Recording



Coordination Meetings



Project Site Selction in Pyinmana Township



Field Inspection



Meeting with local people





Community Forestry On Site Training



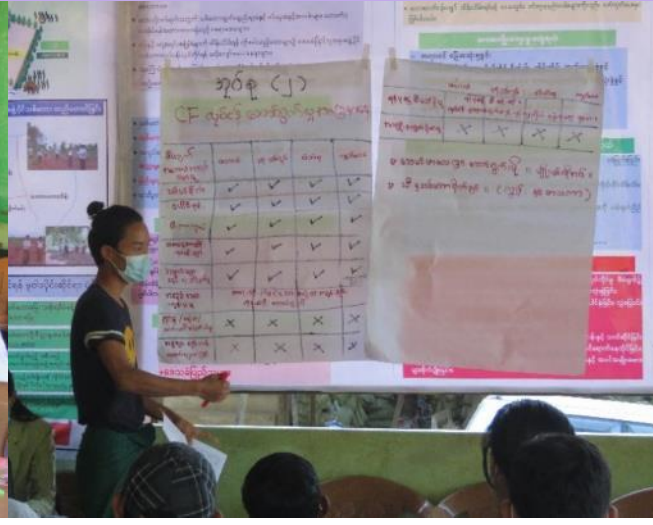


Forest Inventory in Community Forest for Local People





Reviewing on Community Forest User Members





Year I



Limited activities from 2021 Feb to Nov (10 months)
Actual implementation period about (6 months)



03

Challenges and Way Forwards

Challenges



- COVID 19 Pandemic
- Changing Project Site
- Changing the Project Staffs
- Limited Resources persons (NC etc..)
- Limitation of Budget Withdraw
- Security Situation in Project area
- Limitation of Crowded People for workshop, training etc..
- Limitation of travelling with grouping for exchange visit

Challenges



Changing Project site

Changing Project Staff

Project Implementation

Kayah

Shan

1. Community Based Tourism

Lwe Nyein CF

2. NTFP CFE

Mine Thauk CF

- Project Management Unit (HQ)
- Field Level Team (District & Township)

Last formed in 24.4.2022

1. Planting / Establishment

- Nursery
- Plantation

2. Trainings

- CF basic concept training for local people
- CFE concept training for staffs and local people (**Experts**)
- **Exchange visit**

3. CF Assessment Surveys

- Potential CFE types (**NC**)
- Enterprise Development Plan (**NC**)

4. Sharing information in Mekong Region and ASEAN meetings

Way Forwards

- Coordination with stakeholders including CF user groups and related department
- Forming the network for community forest user
- Training for NTFP development, CBT development plan
- Exchange Visit
- Implementation CBT development plan
- Reviewing the CF user in project area
- Supporting the CBT and NTFP development
- Sharing the project result in Mekong region or ASEAN meeting



Exit Strategies

- Network of CF user will play the sharing information and coordination.
- CBT will support the income for local people.
- Forest Department will continue the monitoring and supervising all activities of CF User Group.
- Local CSO will coordinate with CF user group to promote the CBT activities.
- Livelihood support program will encourage the activities of community forestry for their income.
- Agroforestry development program will get the benefit of income and forest product from subsistence use through commercial for long term.
- CFDWG, CFSWG will support the information sharing and technical for monitoring, supervising, implementation etc...





Thank you

<https://www.mekonginstitute.org/what-we-do/development-fund/mekong-republic-of-korea-cooperation-fund/>