

WHAT'S INSIDE

MI Launches Strategic Plan 2021-2025

MI 25th Anniversary Campaign
Underscores Partnerships

MKCF Project on Myanmar Community
Forestry Development Rolls Out

Cambodia Launches MKCF-Logistics
Monitoring and Evaluation Database
Project

New Year, Fresh Start

Sharing Smart Technology Approaches for
Tourism Recovery

MI Alumni Feature: When We Share, We
Grow



TRAININGS/WORKSHOPS/SLV ACTIVITIES



MI Launches Strategic Plan 2021-2025

With support from the MI Governing Board, MI released its action plan for 2021-2025. The document lays the foundation in deepening regional cooperation and integration through capacity building, dialogue, and advocacy investments across the areas of agricultural development and commercialization, trade and investment facilitation, and sustainable energy and environment. The document also details MI's elevated portfolio of services, which will bring together diverse knowledge and policy-enhancing support for the delivery of holistic services to the GMS. [Read more.](#)

MI 25th Anniversary Campaign Underscores Partnerships

After a quarter of a century of service, MI will launch a series of activities to highlight old, new, and forthcoming partnerships with GMS governments, development organizations, and regional cooperation bodies. From January to August 2021, MI will also spotlight its history and milestones, as well as present recommendatory actions on emerging regional trends and opportunities, particularly against a COVID-19 landscape, through its popular and wide-reaching dialogue-for-action platforms to further build public-private alliances that will support the effective implementation of MI's Strategic Plan 2021-2025.

MKCF Project on Myanmar Community Forestry Development Rolls Out

With support from the Mekong-Republic of Korea Cooperation Fund (MKCF) and MI, Myanmar's Forest Department and Ministry of Natural Resources and Environment Conservation launched the "Demonstration of Model Community Forests to Promote Community Forestry Development and Improve Livelihood of Local Community" project on January 6, 2021. The project is designed to promote forest preservation by working with local communities to institutionalize environment-friendly approaches in managing agroforestry, community-based tourism, and non-timber products. [Read more.](#)



Cambodia Launches MKCF-Logistics Monitoring and Evaluation Database Project

As Fund Manager of MKCF, MI attended the “Capacity Building and Institutional Strengthening for Logistics Monitoring and Evaluation Database Development in Cambodia, Lao PDR, and Vietnam” project kick-off meeting on January 6, 2021. The project, which is one of 20 supported by MKCF beginning in 2013, will build a comprehensive cross-country logistics information system to support the increase of trade competitiveness and foreign direct investments in the three countries. [Read more.](#)



New Year, Fresh Start

To effectively roll out 28 projects in 2021, MI staff safely convened to discuss internal guidelines and implementation strategies that will help deliver impactful development services in Cambodia, P.R. China, Lao PDR, Myanmar, Thailand, and Vietnam.



Sharing Smart Technology Approaches for Tourism Recovery

An MI official detailed how smart technologies and a re-assessment of new market demands can help stimulate inbound tourism recovery in Cambodia, Lao PDR, Myanmar, Vietnam, and Thailand at an online workshop on January 22, 2021. Hosted by Local Alike, the activity pooled concerted approaches from experts and practitioners across the Mekong region that can support community-based tourism in a pandemic landscape.



Supporting Khon Kaen Community Activities

MI hosted a meeting for officials of the Khon Kaen Provincial Government, Khon Kaen University, and private associations to safely organize the Khon Kaen 21 Half Marathon at the MI Headquarters last January 8, 2021. Rescheduled to August 29, 2021, KhonKaen 21 is open to runners from Thailand. [Read more.](#)



UPCOMING ACTIVITIES

FEBRUARY

3 - 5

Training Program on Good Hygiene Practices (GHP) in Restaurant and Canteen in Cambodia

25

Food Safety Forum in Lao PDR

22 - 19
MAR

Project Evaluation of Green Freight and Logistics Development in Mekong Countries

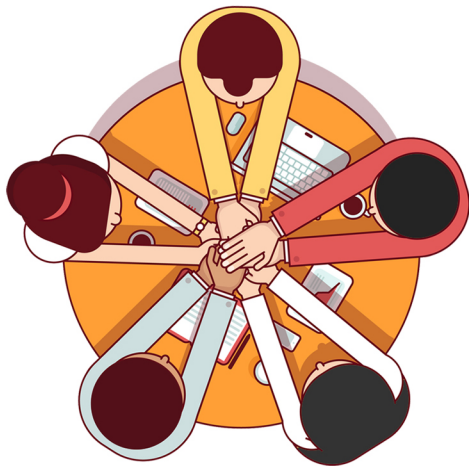
MEKONG INSTITUTE

123 Mittraphap Road
Muang District
Khon Kaen 40002
Thailand

T: + 66 (0) 43 202 411
F: + 66 (0) 43 203 656
information@mekonginstitute.org



For more information on upcoming MI activities, visit <https://cutt.ly/jkh20aS>



In Sharing, We Learn

In celebration of 25 years of service, MI will feature 12 alumni who are making inroads in their respective fields. As agents of change, these government, business, research, student, private sector, and business representatives—who were trained by MI—are enhancing capacities, strengthening policies, raising awareness, promoting economic growth, and inspiring change in Cambodia, P.R. China, Lao PDR, Myanmar, Thailand, and Vietnam.

Their stories reflect MI's core mission of cementing regional connectivity through partnerships, knowledge-sharing, and advocacy for the benefit of all in the GMS.

For January 2021, meet Dr. Thazin Han, a hardworking and dedicated scientist under the Department of Research and Innovation from Myanmar's Ministry of Education. Tapping her expertise as a scientist and policy maker, MI has invited Dr. Thazin to share what she has gained from MI and, more importantly, how she is passing on what she has learned to counterparts in Myanmar.

How did you become part of the MI family?

I registered as a PROSAFE training participant in 2019 because I wanted to better understand and develop policies on food safety emergency management. This is so I can contribute to the formation of food safety guidelines that will help us mitigate, prepare, respond, and recover from food hazards and risks.



A year later—MI who was aware of my background as a national Science, Technology and Innovation (STI) policy developer—invited me as a resource person to introduce practical approaches to Myanmar government, academic, and business representatives on how to collaboratively develop a strategic Science, Technology and Innovation Plan to make more efficient public services and enhance livelihood.

How has MI helped you in your professional evolution?

MI provided me opportunities. The opportunity to learn about food safety, to meet and work with different people from the GMS, and more importantly, to share what I know about STI and learn from others. Through MI, I also learned other approaches that can strengthen research and development, as well as smoothen coordination and linkages among diverse stakeholders. I have also picked up good facilitation techniques from MI.

What has MI taught you on a personal level?

That knowledge does not grow in a vacuum and sharing what we know is our responsibility in building a strong country and subregion. MI also opened my eyes to the value of learning different development perspectives and approaches. Through the multi-cultural exposure provided by MI in their trainings, I was also able to take home best practices that would best fit food safety and STI development in my country.

What do you think is the value of MI to Myanmar?

Partnership in knowledge-building and sharing. MI helps build our capabilities by teaching us systems that we can apply in our field of work. MI staff also motivates us to make a difference through the guided implementation of action plans in our home countries. This type of learning and sharing culture stimulates growth and innovation. It also makes us more interested to work with other GMS nationals so we can continue to build on what we know not just for the benefit of our country but the region, as well.

