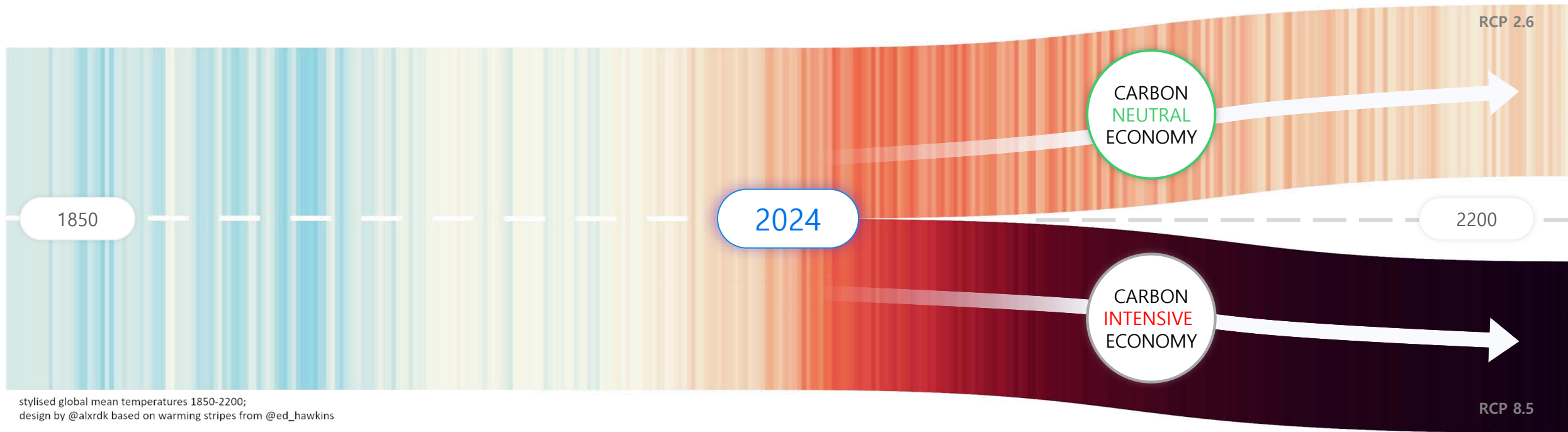


E-MOBILITY ITMO PROJECT

Official Launch Of Korea-Cambodia ITMO Project
For Cambodia E-Mobility Business

VERYWORDS

CARBON NEUTRALITY IS AN URGENT GOAL FOR HUMANITY.



e-Mobility Business Model through Diverse Projects



2019.10
Pilot Project in Cambodia



2020.04
Development of Business Model



2021.07
Pilot Project in Indonesia



2022.05
Net-Zero Culture complex POPEL Station Launching



2022.05
Agreement for the sale of commercial



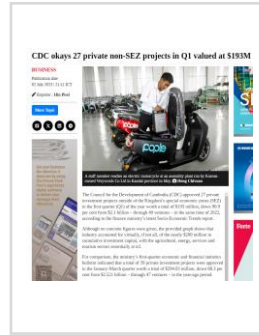
2023.02
Development of an Eco-Platform



2023.03
Initiation of Charging Infrastructure



2023.05
Establishment of Assembly Factory



2023.07
Approval of QIP in Cambodia



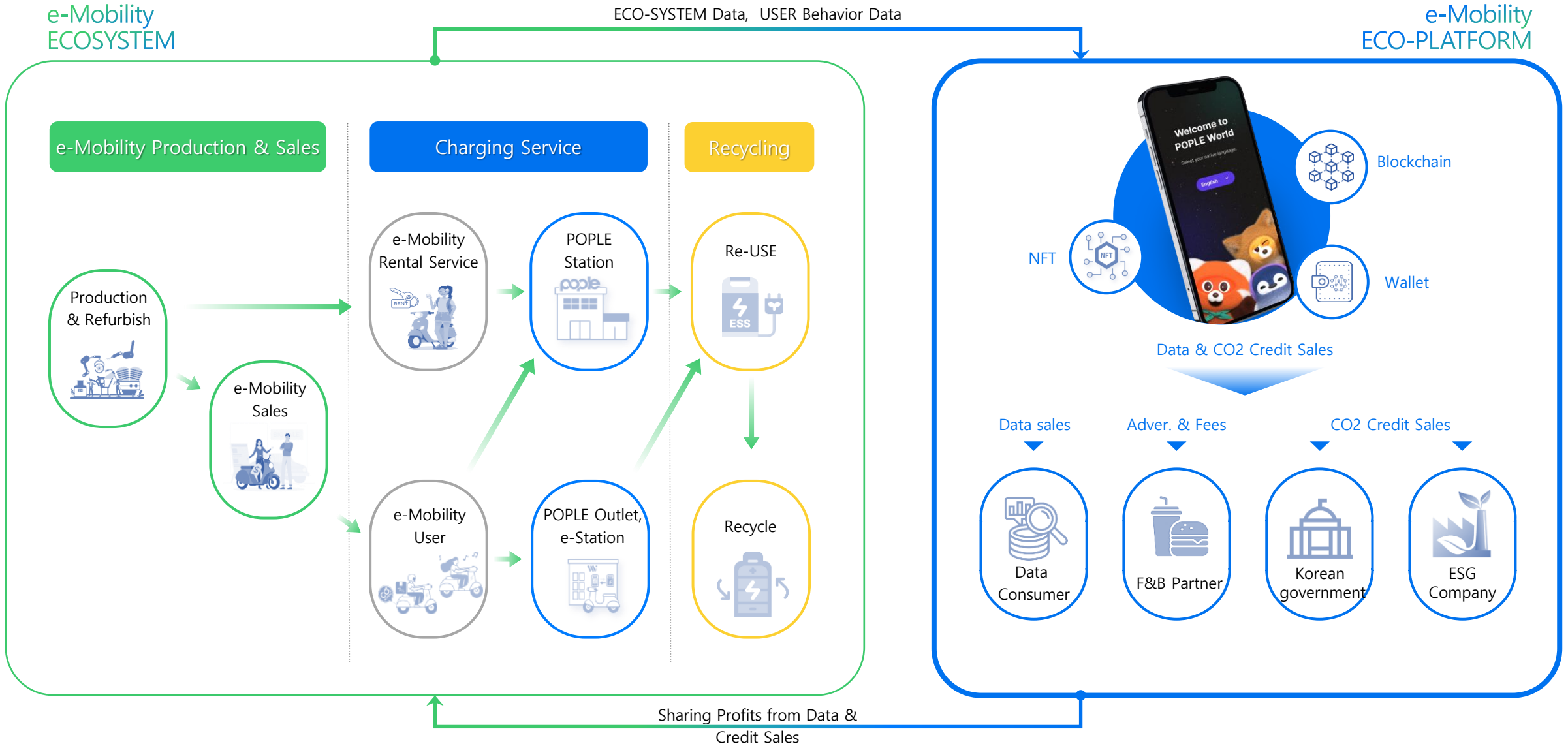
2023.07
Development of Financial Program

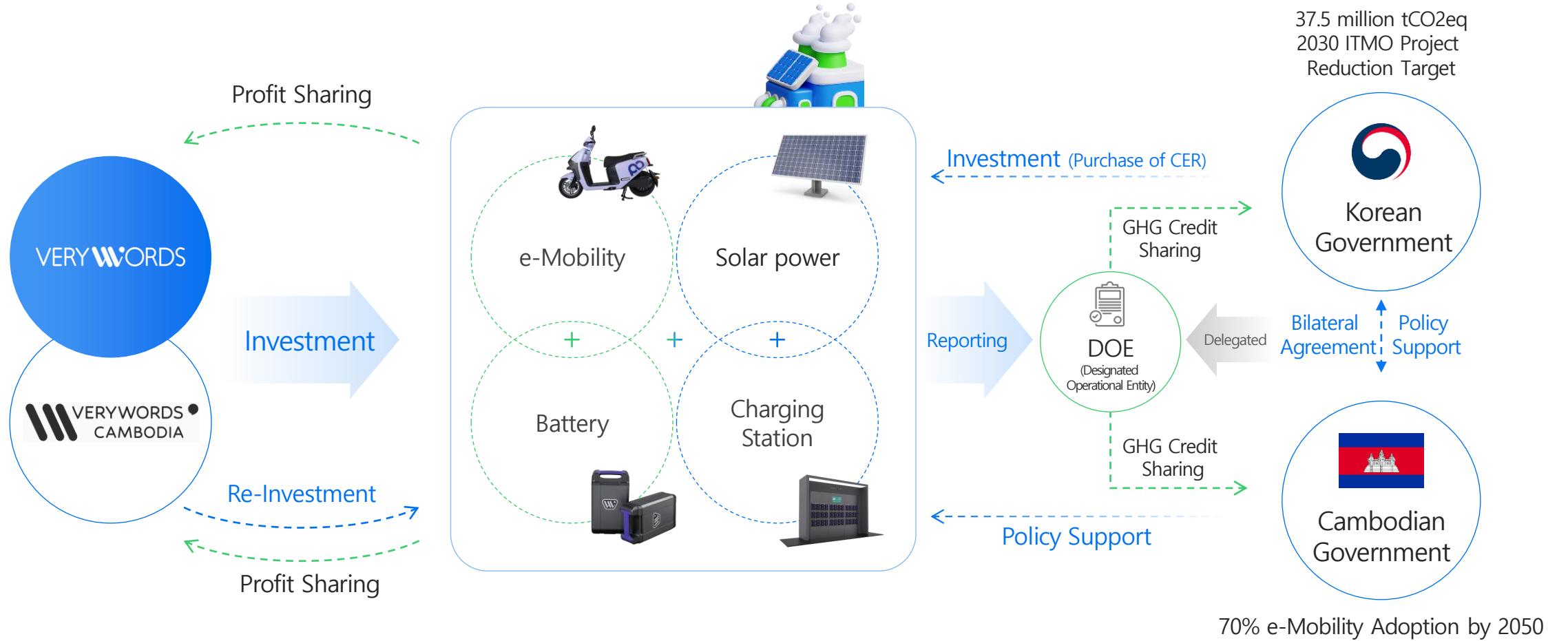


2023.11
Charging Infra with Bank



Cambodia's e-Mobility Ecosystem





POPLE Station



Charging station combined with Cultural Spaces

Cultural Complex e-Station

A Center for Promotion and Cultural Hubs



- Emissions-free, Solar-power based Charging Station
- A/S service and charging
- Cultural spaces with cafes
- Promotion for the general public and service users

POPLE Outlet



Product Service and A/S service all in one

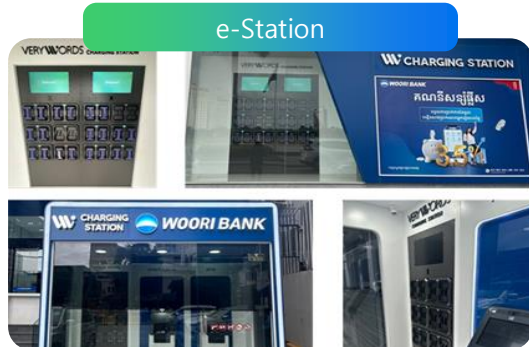
Service center & showroom POPLE Outlet

e-Station management and service centers



- Combination of product purchase and after-sales services
- A user-friendly charging station that integrates purchase and maintenance
- Provision of convenient charging services through e-station battery management

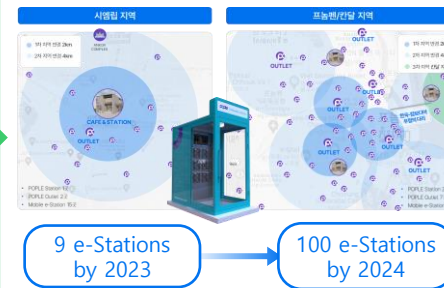
POPLE e-Station



Easily installable Charging station at ATMs and shops

Designed for accessibility e-Mobility Station

Station with enhanced convenience



- A model integrated with ATM machines, gas stations, and small-scale shops
- Numerous pilot projects in collaboration with Woori Bank
- Services in collaboration with ESG-focused companies
- Rapid Scalability

Over 100 Location: 72 in Phnom Penh, 18 in Siem Reap, 10 along Route 6

1 Phnom Penh

- Capital City, with highest density of population and traffic due to economic growth
- Various bank branches, shopping malls, and key urban hubs across Cambodia

Woori Bank	Shopping Mall	Biz Center	Gas Station	ATM	Mart	Commercial	ETC
26	3	2	13	3	5	6	14

2 Siem Reap

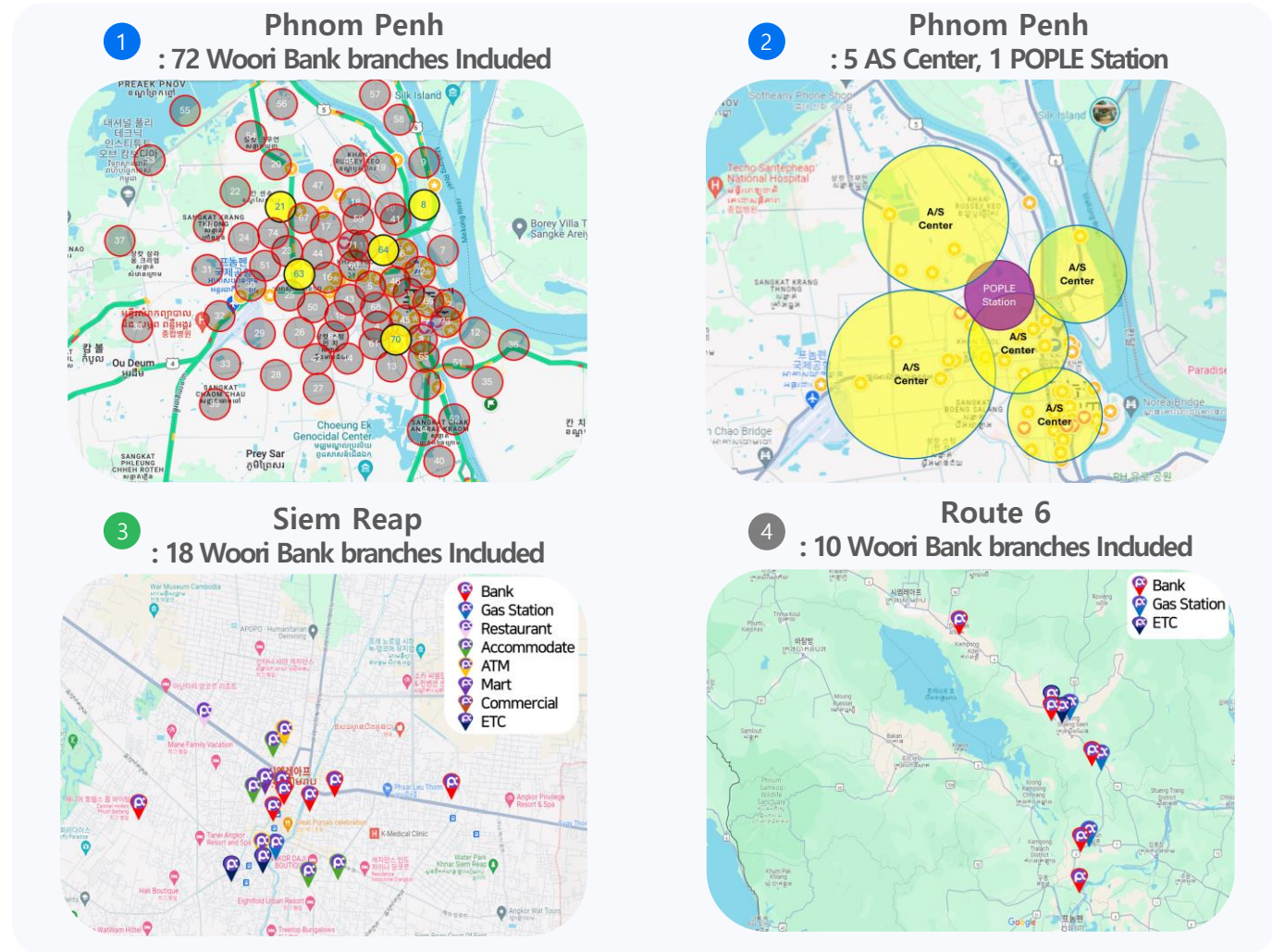
- Cambodia's second-largest city, with high demand for transportation and tour services
- e-Mobility charging stations at Woori Bank branches frequently visited by residents

Woori Bank	ATM	Mart	Gas Station	Restaurant	Accommodation	Commercial	Residential	ETC
6	2	1	1	1	2	1	2	2

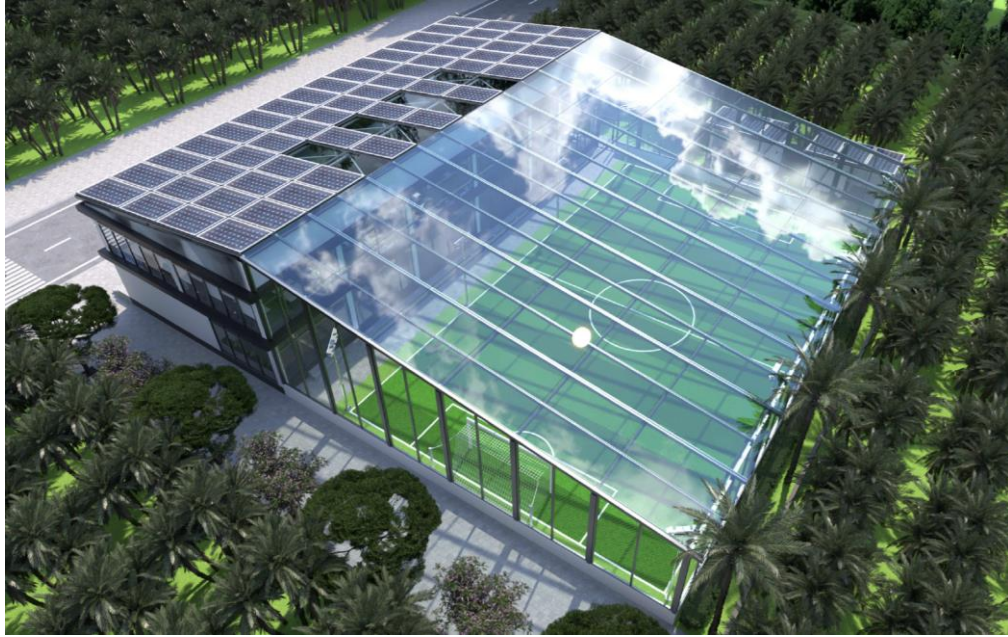
3 Route 6

- The highway connecting Phnom Penh and Siem Reap, with a length of 416 km
- A large population resides, including major cities Kampong Cham and Kampong Thom

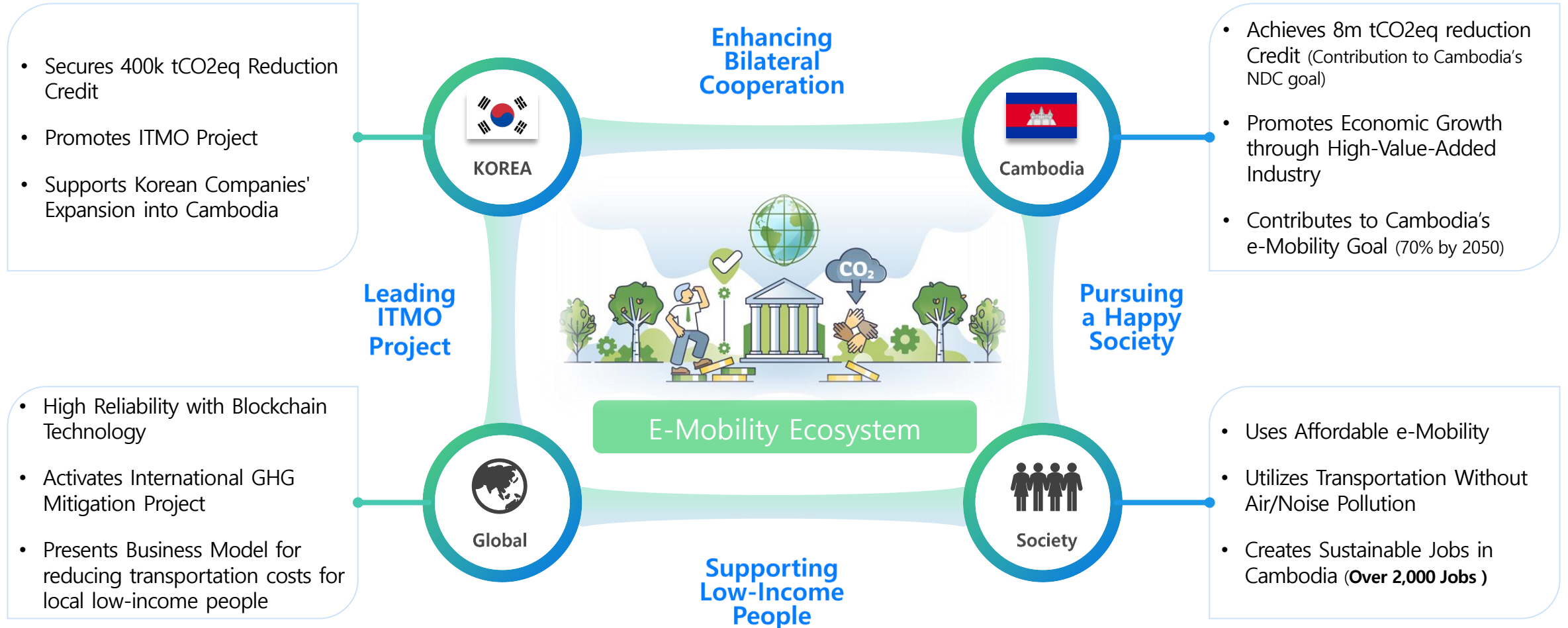
Woori Bank	Gas Station	ETC
5	3	2











Through the E-Mobility Eco-platform,
Verywords will create a new paradigm for greenhouse gas reduction

Confidential and Proprietary. Copyright © by 2024 VERYWORDS All Rights Reserved.